

FOR LEASE

2,200 SF + 1,500 SF(BASEMENT) + OUTDOOR SPACE AVAILABLE

359 GRAHAM AVENUE, BROOKLYN NY 11211

LOCATED ON THE CORNER OF GRAHAM AVENUE & CONSELYEA STREET



Brooklyn Real Property, Inc.
also known as **BRP Associates, Inc.**

389 Atlantic Ave Brooklyn NY 11217 (718) 875-8899
www.BrooklynRealProperty.com

Jin Hee Son Licensed Real Estate Salesperson
(917) 519-3440 JinHeeSon@BRPAssociates.us

PROPERTY OVERVIEW

HIGHLIGHTS

- 2,200 SF + Outdoor space opportunity
- Additional 1,500 SF in the basement
- Corner of Graham Ave & Conselyea St gives 23' & 93' frontage
- Gas & Ventilation in-line
- Walk-in refrigerator in basement
- One block from train station(L)

DEMOGRAPHICS

- Population: 104,561
- Median age: 30.8
- Average Income: \$128,607
- Family households: 52.0%
- Average number of people per household: 2.54

TRAFFIC COUNTS

- Average daily traffic: 4001-10,000



www.BrooklynRealProperty.com

Jin Hee Son Licensed Real Estate Salesperson
(917) 519-3440 JinHeeSon@BRPAssociates.us



* This is 3D rendering with virtual staging.



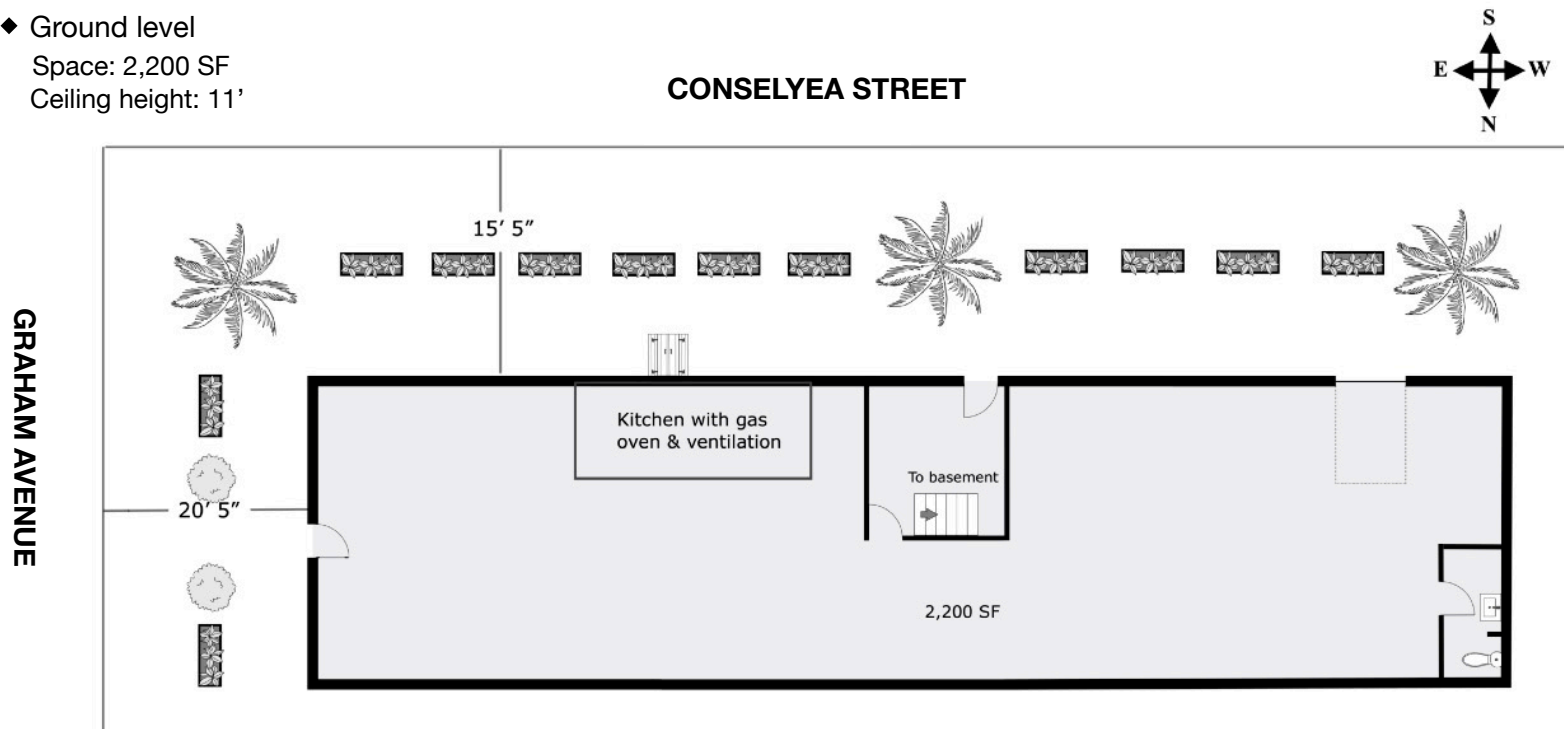
www.BrooklynRealProperty.com

Jin Hee Son Licensed Real Estate Salesperson
(917) 519-3440 JinHeeSon@BRPAssociates.us

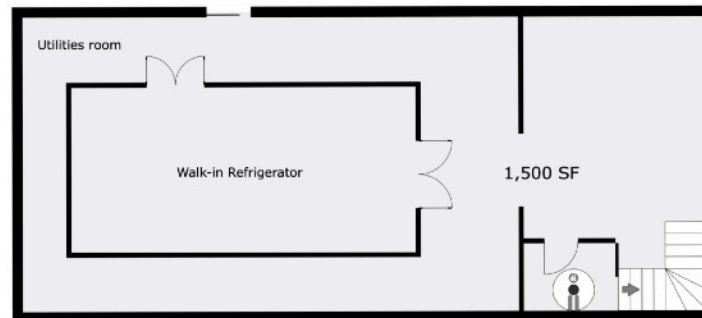
All information supplied is from sources deemed reliable and is furnished subject to errors, omissions, modifications, removal of the listing for sale or lease, and to any listing conditions, including the rates and manner of payment of commissions for particular offerings imposed by principals or agreed by this Company, the terms of which are available to principals or duly licensed brokers. Any square footage dimensions set forth are approximate.

FLOOR PLANS

- ◆ Ground level
Space: 2,200 SF
Ceiling height: 11'



- ◆ Basement
Space: 1,500 SF
Ceiling height: 6' 9"

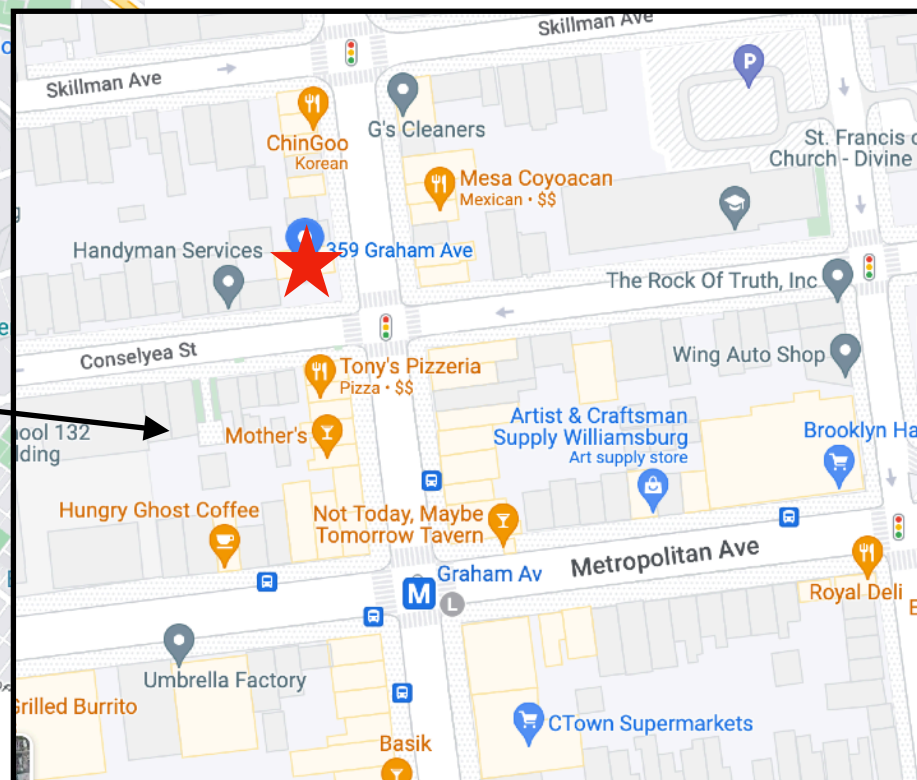
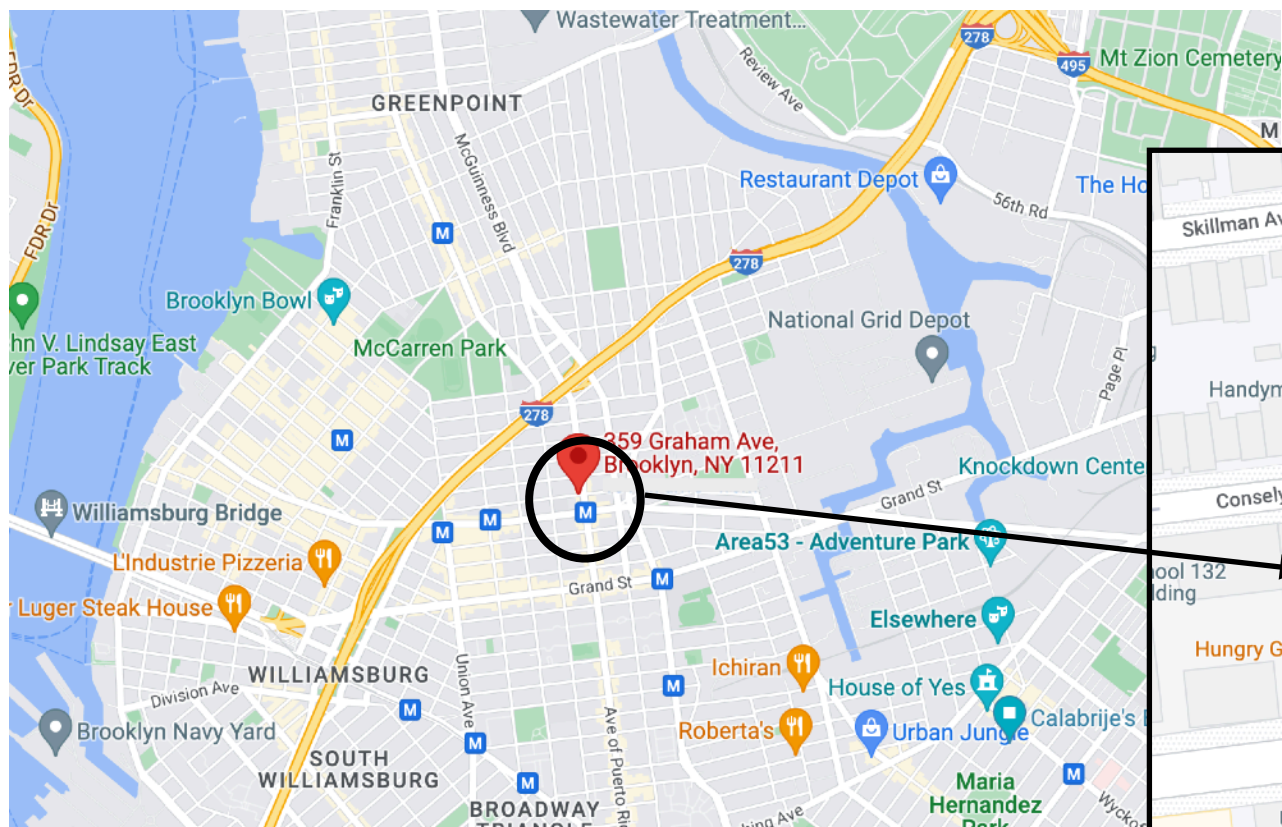


*THIS FLOORPLAN IS PROVIDED WITHOUT WARRANTY OF ANY KIND. BROOKLYN REAL PROPERTY, INC DISCLAIMS ANY WARRANTY INCLUDING, WITHOUT LIMITATION, SATISFACTORY QUALITY OR ACCURACY OF DIMENSIONS.



www.BrooklynRealProperty.com

Jin Hee Son Licensed Real Estate Salesperson
(917) 519-3440 JinHeeSon@BRPAssociates.us



Great business opportunity in South Williamsburg on Graham Avenue

- Restaurant
- Cafe
- Clothing & Accessories
- Bookstore
- Kids cafe with indoor playground
- Nursery (flower & gardening)
- All types of businesses



www.BrooklynRealProperty.com

Jin Hee Son Licensed Real Estate Salesperson
(917) 519-3440 JinHeeSon@BRPAssociates.us

All information supplied is from sources deemed reliable and is furnished subject to errors, omissions, modifications, removal of the listing for sale or lease, and to any listing conditions, including the rates and manner of payment of commissions for particular offerings imposed by principals or agreed by this Company, the terms of which are available to principals or duly licensed brokers. Any square footage dimensions set forth are approximate.